

Precautions for LVP Flooring Installation

1. Before installing the flooring, check whether the subfloor is level. The standard for checking is that the height difference under a 2-meter straightedge should be less than 3mm. If the original subfloor does not meet this levelness requirement, it is recommended to apply a cement-based self-leveling compound with the following specifications:
 - a. For full-spread adhesive installation, it is recommended to use a two-component polyurethane wood flooring adhesive (AB type). In this case, the cement-based self-leveling compound must have a tensile bond strength of at least 1.2 MPa.
 - b. For floating installation, the cement-based self-leveling compound must have a tensile bond strength of at least 0.5 MPa.
 - c. The moisture content of the subfloor must be $\leq 2\%$. If it exceeds 2%, there is a risk of moisture absorption and expansion.
 - d. For floating installation, a standard cement-based self-leveling compound is sufficient.
 - e. Gypsum-based self-leveling compounds are not recommended, as they carry the risk of moisture absorption, expansion, and eventual disintegration over time.
 - f. For adhesives and self-leveling materials, it is recommended to consult with suppliers such as Mapei, Uzin (Germany) and Tresbon.
2. The dimensional changes of LVP Flooring are primarily due to expansion from moisture and contraction from dryness. It is recommended to install the flooring only after the indoor temperature and humidity have reached equilibrium. Therefore, before installation, the flooring should be unpacked 24 hours in advance to allow it to acclimate to the surrounding environment. **For floating installation with click-lock flooring, no expansion joints are required for areas under 32.8 feet (10 meters). For areas exceeding 32.8 feet (10 meters) in length or width, expansion joints should be added every 32.8 feet (10 meters). Additionally, an expansion gap of no less than 1 cm should be left around all walls and these gaps should not be filled with sealant.**
3. LVP Flooring uses a floating installation method with a click-lock system and is not in tight contact with the subfloor. Therefore, it is not recommended to frequently move heavy objects on the flooring, as this may cause damage. Due to the expansion and contraction characteristics of click-lock flooring, it is also not advisable to place heavy objects on it for long periods, as this may restrict the flooring's ability to expand and contract.

If you do not wish to add expansion joints in areas larger than 10 meters, or if the flooring will be installed in environments with heavy objects placed or moved frequently, full-spread adhesive installation is recommended to minimize potential risks. The recommended adhesives are MS polymer modified silane wood flooring adhesive and two-component polyurethane (AB type) wood flooring adhesive.(Mapei)

4. It is not recommended to install LVP Flooring directly in damp environments, especially on ground-level concrete floors without a basement, where moisture can rise from the soil. In such cases, a moisture barrier must be installed. A moisture barrier should be laid and properly sealed before installation.

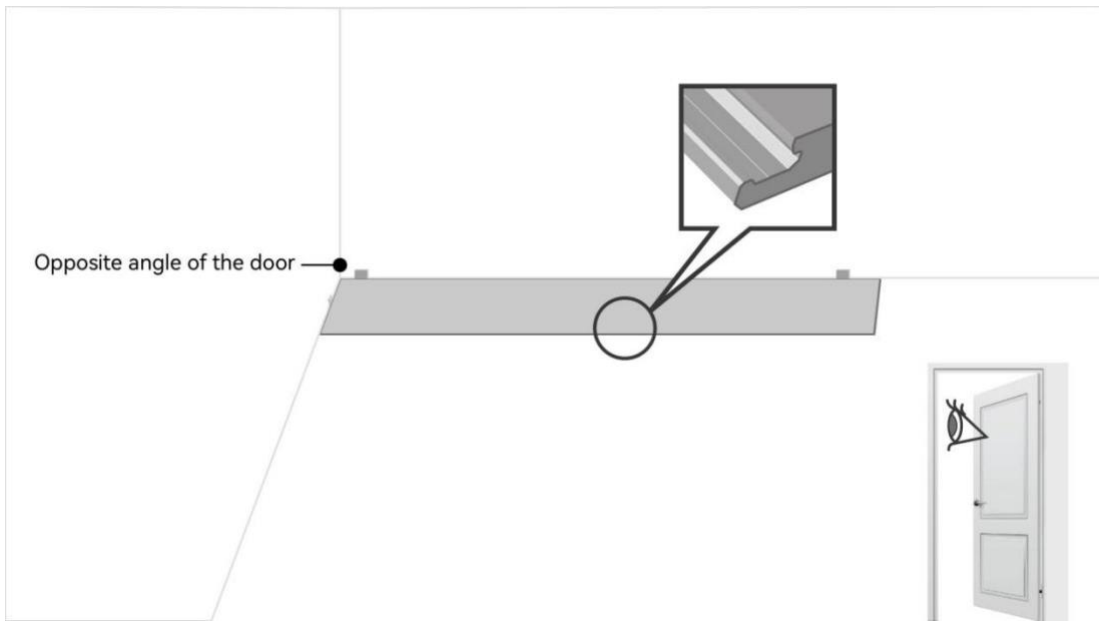
5. Before installation, store the product indoors. Do not place it outdoors or in semi-open spaces to avoid the impact of environmental factors. Once the plastic packaging is opened, the flooring should be installed as soon as possible.

6. Areas exposed to prolonged sunlight (such as floor-to-ceiling windows, sunrooms, or semi-outdoor rooms) are not suitable for floating installation. Full-spread glue-down installation is recommended. Installation is also not advised when the ambient temperature on site is below 50 °F. We recommend using Mapei Ultrabond ECO 995 or Mapei Ultrabond ECO 980.

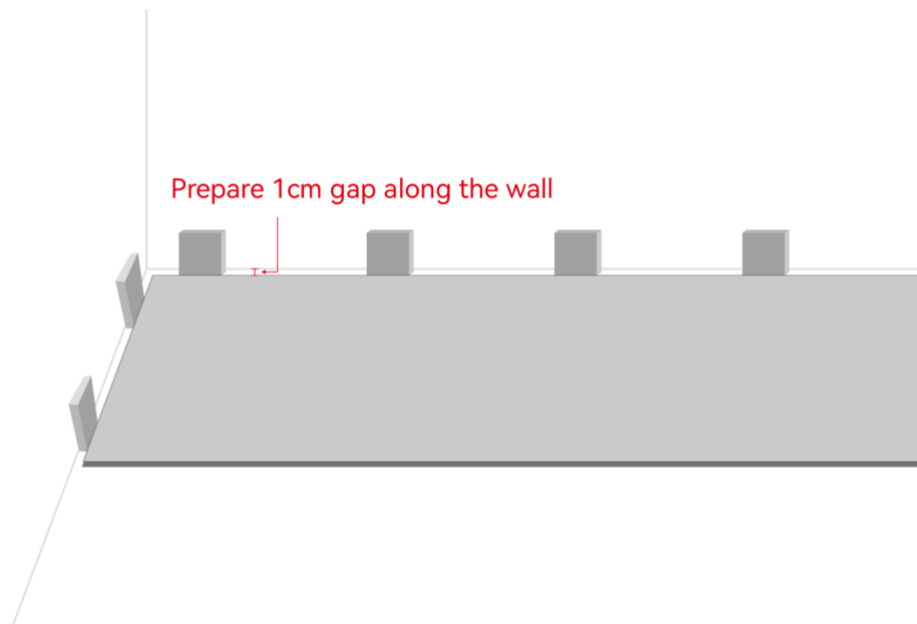
7. Radiant-heat floors are not recommended for this product.

—— Installation steps (Valinge 2g-2g) ——

1. Confirm the direction of flooring installations and then confirm the location of initial plank, normally the initial plank should start at the opposite side of the door. Arrange the tough side against the walls (shown as the picture)



2. Locate 1cm (**3/8 inch**) blocks along the wall, which ensure the gap will always be available during the installation works. **(Leaving a 3/8-inch expansion gap is critical and mandatory for floating installations.)**



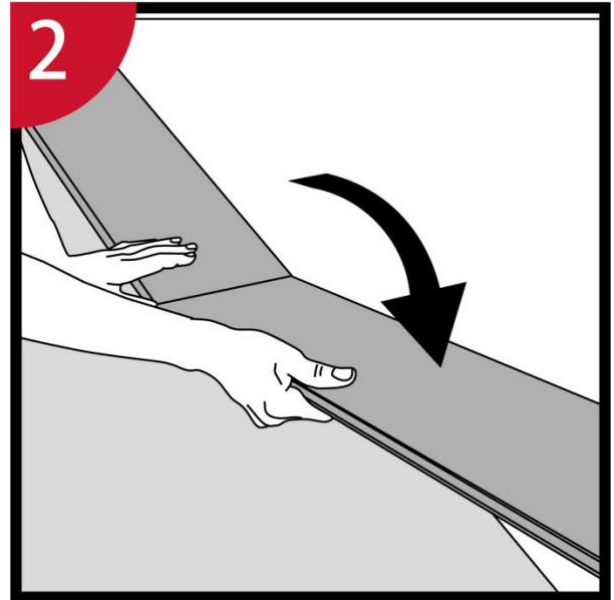
First plank, first row

Place a spacer with 0.4-inch thickness to the left and position the panel against the wall. Later, after 3 rows, you can easily position the flooring against the front wall with predicted spacers.

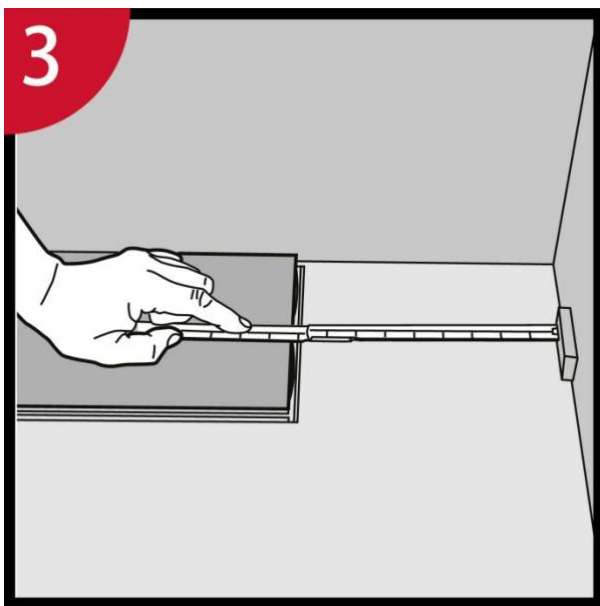


Second plank, first row

Press the short end of the next plank at an angle to the first one and then fold down. Complete the first row in the same way.

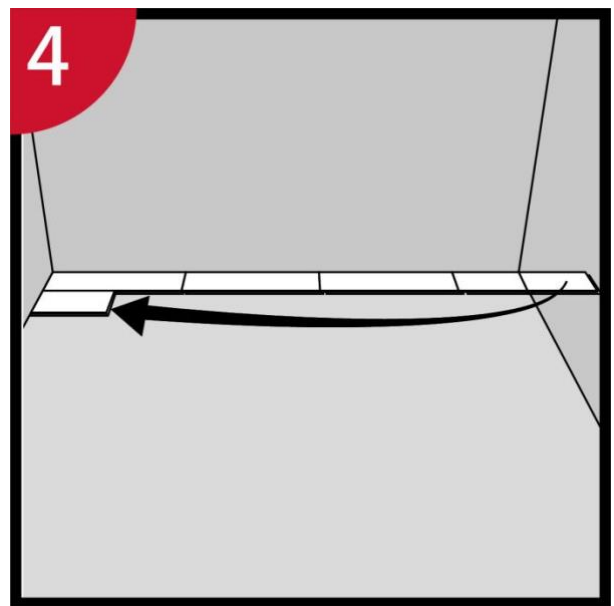


At the end of the first row, put a spacer to the wall and measure the length of the last panel to fit.

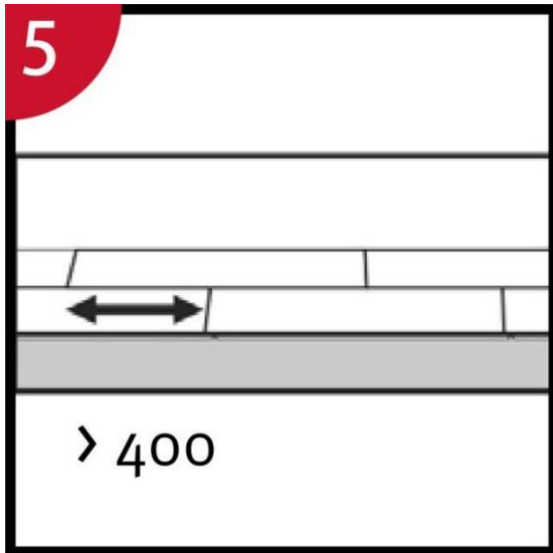


Second row

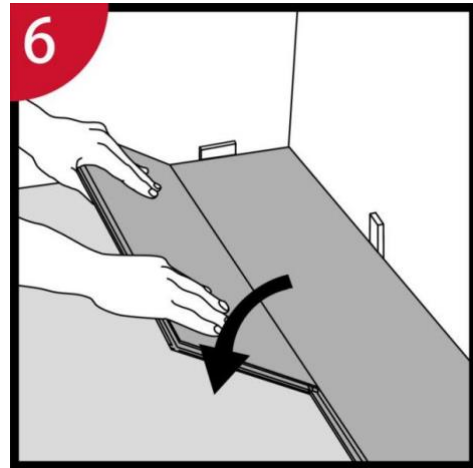
First panel min length > 400 mm. Put a spacer against the left wall.



Staggered joint distance i.e. minimum distance between short ends of panels in parallel rows shall not be less than the given length.



Place the plank and angle against the plank in the previous row, press forward and fold down at the same time. Leave the plank in a somewhat up angled position when the planks start to lock. To make this further easier, a wedge with the suitable angle can be placed under the plank near the short side joint as support.



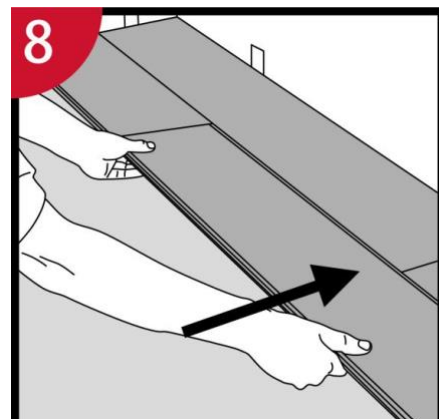
Second plank, second row

Insert the short end of the plank into the previous one **at an angle**, but do not push it in all the way — leave approximately 1cm gap and fold down all the way. The short ends will be fully locked in a later step.



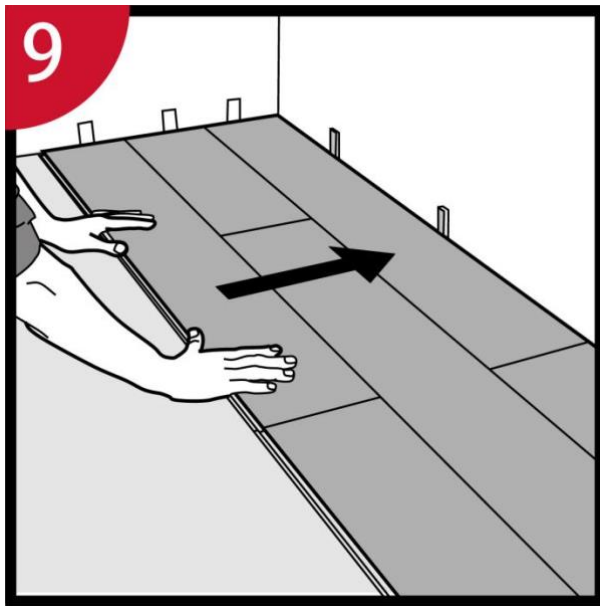
While keeping the new plank lifted **at an angle**, push it forward to align tightly with the previous row. **You should be able to do this using only your hands — if not, please slightly adjust the angle. Do not use a hammer to force the plank into position, as this may prevent the locking system from engaging properly and result in visible gaps.**

Once aligned, the first (or previous) plank can be folded completely down to a horizontal position. If a wedge is used, it can now be moved to the next short-end joint.



After 2-3 rows

Adjust the distance to the front wall by placing distances. Keep the distances in position during the entire time of installation and remove once the installation is completed.



Last row (and perhaps also first row)

Minimum width 50 mm. Place a spacer to the wall before measuring. Make a simple drawing tool (piece of wood with a hole) and mark the panel along the wall. Cut the panels lengthwise including the flexible tongues.

